

Better Cross Stitch

Blue cat

Free cross stitch pattern

<http://bettercrossstitch.com>

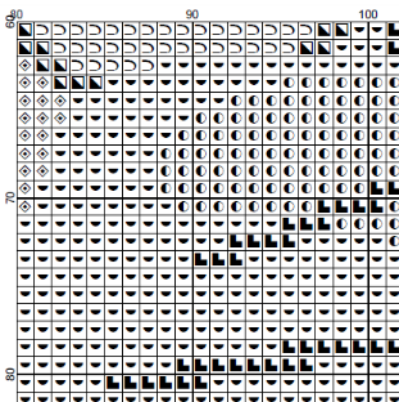


Information

Pattern created from public domain image

You can print the black and white chart.
Black symbols on the white background.

Example:



Or you can print the chart with colors.
That is exactly the same chart. The difference: symbols are printed on the colored background.

Example:



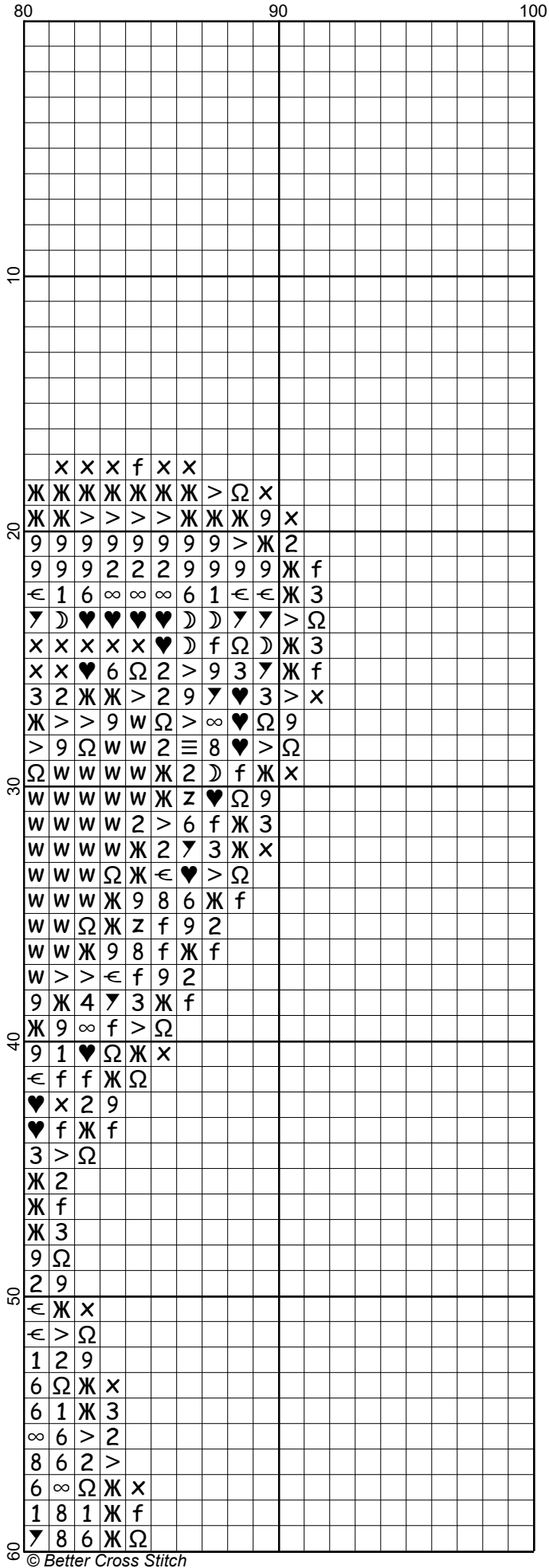
Black and white chart

Chart layout:

Pages:

1	2	3
4	5	6
7	8	9

Blue cat by Better Cross Stitch



Author: Better Cross Stitch
Copyright: © Better Cross Stitch
Website: <http://bettercrossstitch.com>
Fabric: 14 count
Grid Size: 100W x 159H
Design Area: 18.14 cm x 28.85 cm (100 x 159 stitches)

Legend:

	DMC	778	antique mauve - vy lt	(115 stitches, 0.1 skeins)
	DMC	3746	blue violet - dk	(105 stitches, 0.1 skeins)
	DMC	793	cornflower blue - md	(136 stitches, 0.1 skeins)
	DMC	3807	cornflower blue	(108 stitches, 0.1 skeins)
	DMC	809	delft blue	(452 stitches, 0.2 skeins)
	DMC	799	delft blue - md	(285 stitches, 0.1 skeins)
	DMC	162	blue - ul vy lt	(245 stitches, 0.1 skeins)
	DMC	827	blue - vy lt	(3284 stitches, 1.3 skeins)
	DMC	825	blue - dk	(221 stitches, 0.1 skeins)
	DMC	160	gray blue - md	(104 stitches, 0.1 skeins)
	DMC	3756	baby blue - ul vy lt	(124 stitches, 0.1 skeins)
	DMC	775	baby blue - vy lt	(361 stitches, 0.2 skeins)
	DMC	3841	pale baby blue	(112 stitches, 0.1 skeins)
	DMC	3325	baby blue - lt	(313 stitches, 0.1 skeins)
	DMC	803	baby blue - ul vy dk	(174 stitches, 0.1 skeins)
	DMC	823	navy blue - dk	(60 stitches, 0.1 skeins)
	DMC	3752	antique blue - vy lt	(262 stitches, 0.1 skeins)
	DMC	5200	snow white	(1276 stitches, 0.5 skeins)
	DMC	415	pearl gray	(268 stitches, 0.1 skeins)
	DMC	318	steel gray - lt	(169 stitches, 0.1 skeins)
	DMC	414	steel gray - dk	(340 stitches, 0.1 skeins)
	DMC	317	pewter gray	(355 stitches, 0.1 skeins)
	DMC	413	pewter gray - dk	(337 stitches, 0.1 skeins)
	DMC	3799	pewter gray - vy dk	(360 stitches, 0.2 skeins)
	DMC	310	black	(882 stitches, 0.4 skeins)

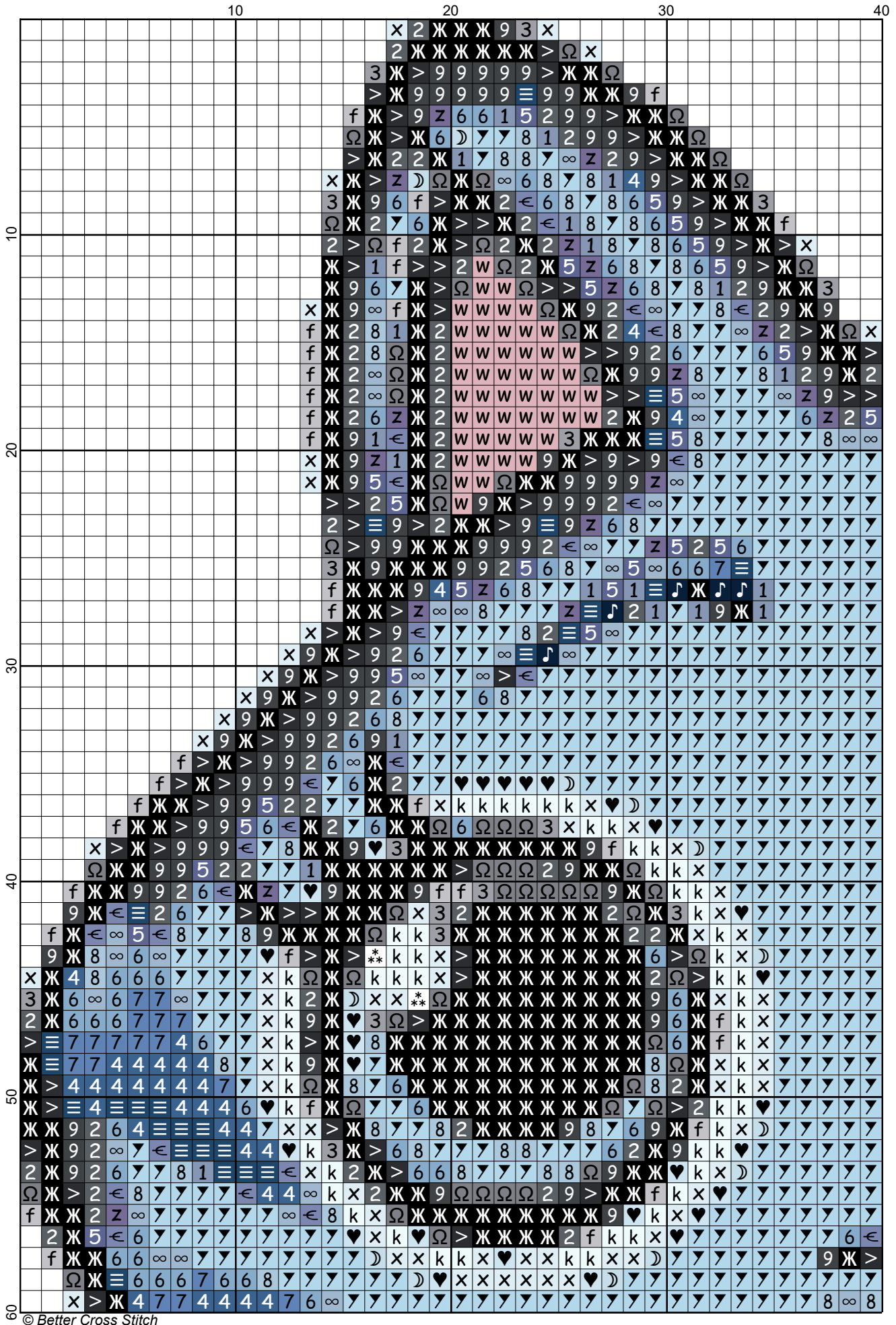
Chart with colors

Chart layout:

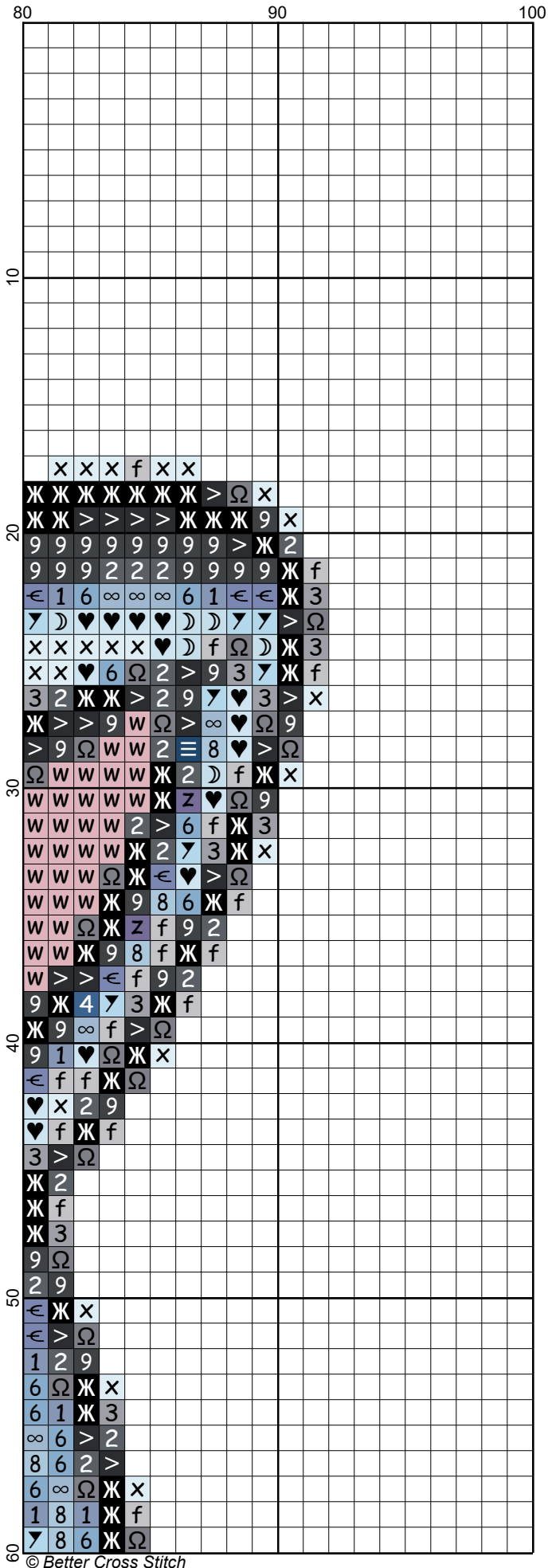
Pages:

1	2	3
4	5	6
7	8	9

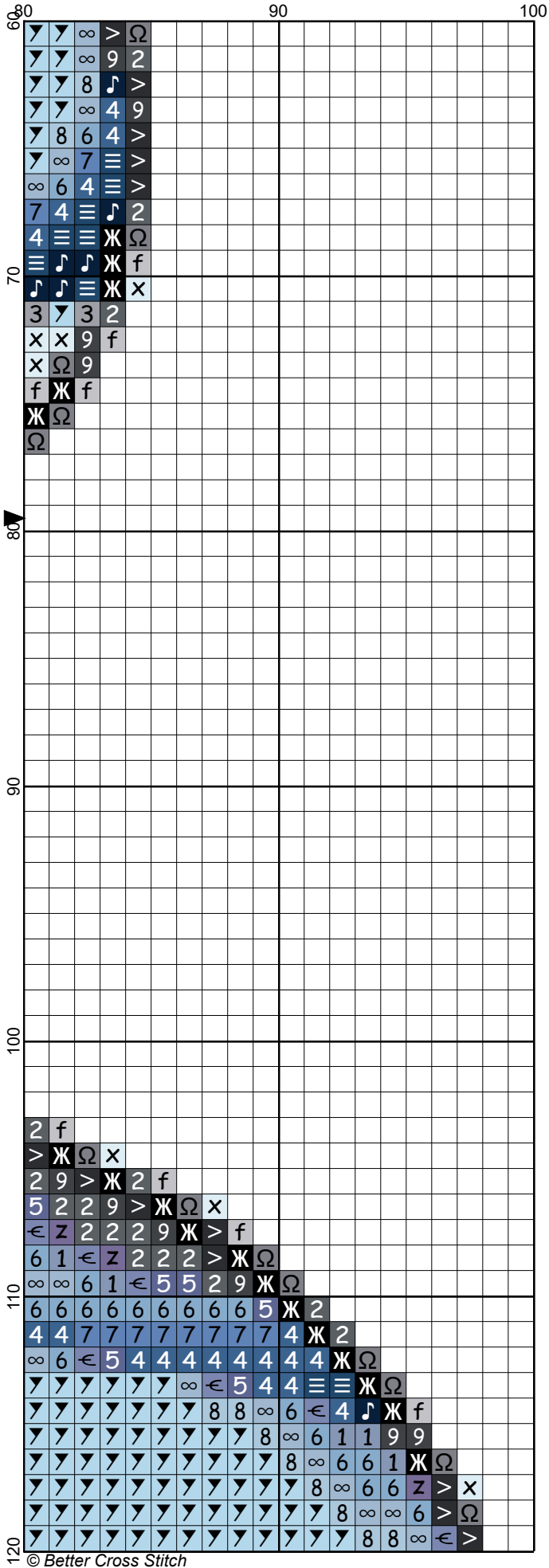
Blue cat by Better Cross Stitch



Blue cat by Better Cross Stitch



Blue cat by Better Cross Stitch



Blue cat by Better Cross Stitch

120																											
														8	8	∞	>	f									
																		8	5	2							
																		∞	>	x							
																				f							
																			2	3							
																			Ω	Ω							
		6	∞												8	∞	6	6	6	6	6	6	6	4	9		
		8													∞	6	7	7	7	7	7	7	7	4	>		
																					6	7	4	4	4	≡	Ж
																						6	4	≡	Ж		
	130																										
140																											
150																											

Author: Better Cross Stitch
Copyright: © Better Cross Stitch
Website: <http://bettercrossstitch.com>
Fabric: 14 count
Grid Size: 100W x 159H
Design Area: 18.14 cm x 28.85 cm (100 x 159 stitches)

Legend:

	DMC	778	antique mauve - vy lt	(115 stitches, 0.1 skeins)
	DMC	3746	blue violet - dk	(105 stitches, 0.1 skeins)
	DMC	793	cornflower blue - md	(136 stitches, 0.1 skeins)
	DMC	3807	cornflower blue	(108 stitches, 0.1 skeins)
	DMC	809	delft blue	(452 stitches, 0.2 skeins)
	DMC	799	delft blue - md	(285 stitches, 0.1 skeins)
	DMC	162	blue - ul vy lt	(245 stitches, 0.1 skeins)
	DMC	827	blue - vy lt	(3284 stitches, 1.3 skeins)
	DMC	825	blue - dk	(221 stitches, 0.1 skeins)
	DMC	160	gray blue - md	(104 stitches, 0.1 skeins)
	DMC	3756	baby blue - ul vy lt	(124 stitches, 0.1 skeins)
	DMC	775	baby blue - vy lt	(361 stitches, 0.2 skeins)
	DMC	3841	pale baby blue	(112 stitches, 0.1 skeins)
	DMC	3325	baby blue - lt	(313 stitches, 0.1 skeins)
	DMC	803	baby blue - ul vy dk	(174 stitches, 0.1 skeins)
	DMC	823	navy blue - dk	(60 stitches, 0.1 skeins)
	DMC	3752	antique blue - vy lt	(262 stitches, 0.1 skeins)
	DMC	5200	snow white	(1276 stitches, 0.5 skeins)
	DMC	415	pearl gray	(268 stitches, 0.1 skeins)
	DMC	318	steel gray - lt	(169 stitches, 0.1 skeins)
	DMC	414	steel gray - dk	(340 stitches, 0.1 skeins)
	DMC	317	pewter gray	(355 stitches, 0.1 skeins)
	DMC	413	pewter gray - dk	(337 stitches, 0.1 skeins)
	DMC	3799	pewter gray - vy dk	(360 stitches, 0.2 skeins)
	DMC	310	black	(882 stitches, 0.4 skeins)